

SCAG Go Human 2020

Case Studies in Equity-Centered Strategies using the SCAG *Go Human* Kit of Parts

Tuesday, January 26, 2021: 2:30 PM - 4:00 PM P21-20279 Poster Session

Dorothy Suchkova, Southern California Association of Governments

Julia Lippe-Klein, Southern California Association of Governments

Andres Carrasquillo, Southern California Association of Governments

With contributions from Kounkuey Design Initiative

www.scag.ca.gov



Research Question



In the wake of COVID-19 and global demonstrations for racial justice, how can a regional government active transportation program prioritize equity, community-led strategies and Black, Indigenous and People of Color communities within planning and engagement?

The SCAG Region



**Nation's
Largest
MPO**

**191
Cities
6
Counties**

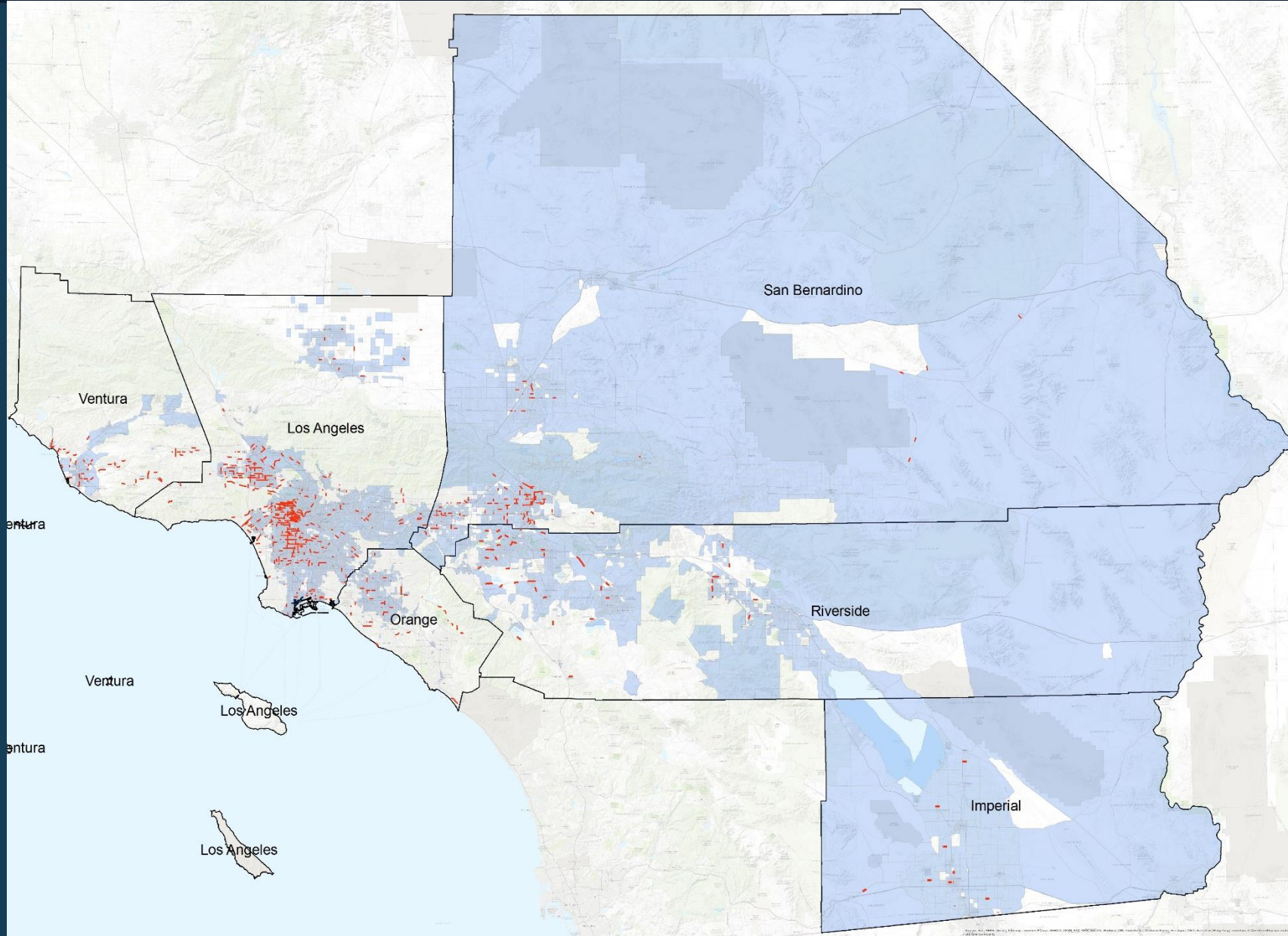
**18.9
Million
People**

**16th
Largest
Economy
in the
World**

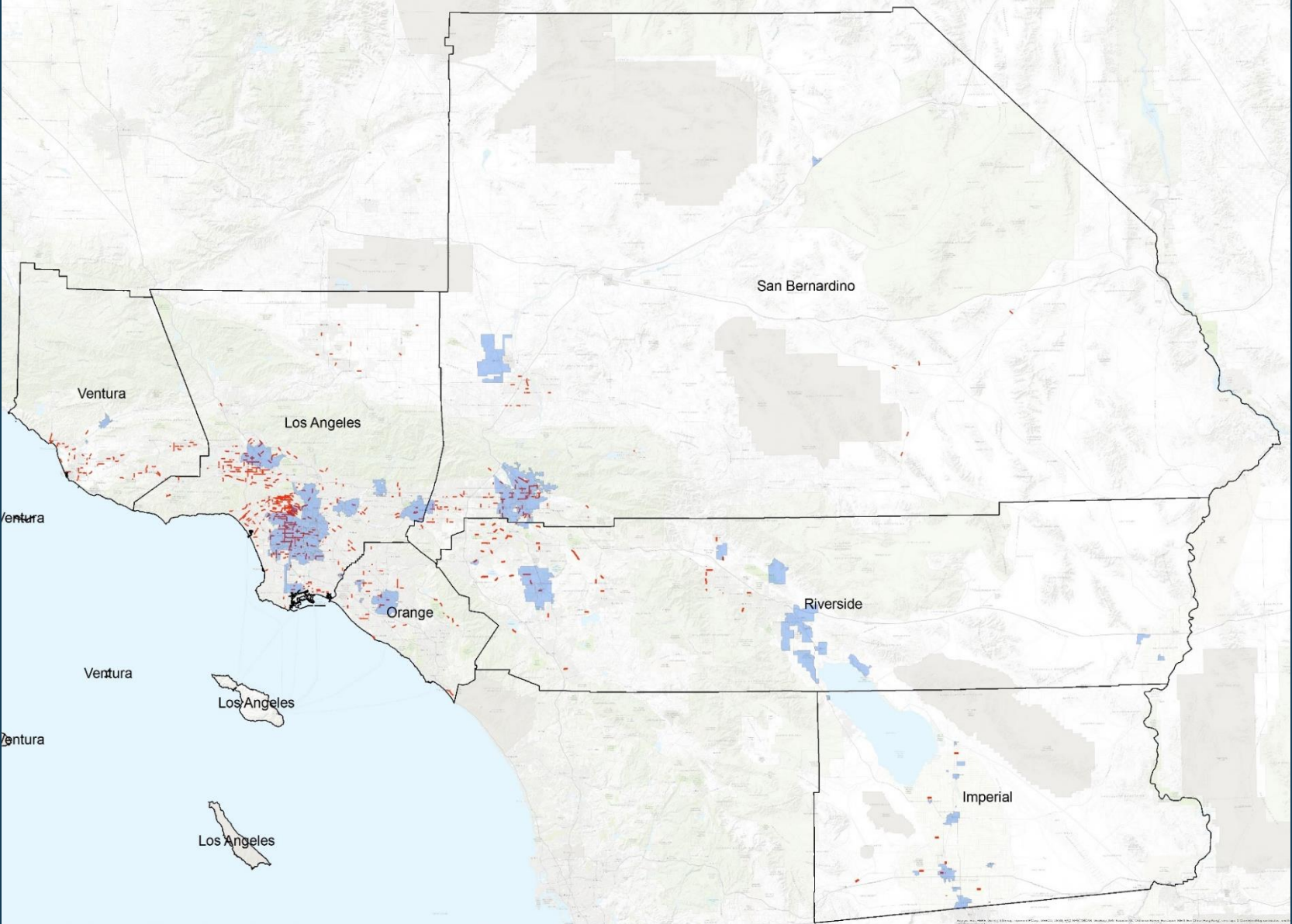
Disparities in Fatalities and Injuries

- Fatalities and serious injuries are mostly occurring in Disadvantaged Communities (DAC) and Communities of Concern (CoC) in the SCAG region.
- Specifically, between 2012 and 2016, 68 percent of fatalities and serious injuries in our region occurred on local streets and arterials and 32 percent of fatal and serious injuries occurred on state highways.
- **Sixty-five percent of fatalities and serious injuries occurred on less than 1.5 percent of the roadway network; most importantly, 66 percent of the High Injury Network is in disadvantaged communities**
- For more information, please consult [SCAG's Transportation Safety Reports](#).

Environmental Justice Area Overlay



Communities of Concern Overlay



SCAG Go Human: Active Transportation Safety & Encouragement Campaign



Regional Advertising Campaign & Co-Branding

Temporary Safety Demonstrations & Programming

Safety Workshops, Webinars & Technical Assistance

Overall Goals and Strategy

- Increase the number of people walking and biking across the region.
- Reduce the number of collisions involving people walking and biking.
- Center community needs related to resiliency and recovery.
- Improve safety for Black, Indigenous and People of Color (BIPOC), as well as children, seniors and disadvantaged communities.
- Foster relationships with community-based organizations and prioritize community-led engagement.
- Use data-informed strategies to prioritize resources along the High Injury Network
- Work towards implementing the strategies and commitments set forth in SCAG's Equity Resolution.

Learn more about Go Human here: <https://scag.ca.gov/go-human>

Fiscal Year 2020 Community-Led, Equity-Centered Strategies



Local Community
Engagement & Safety
Mini Grant Program

Resilient Streets Toolkit
& Technical Assistance

Kit of Parts Pandemic
Strategy

Regional Advertising
Campaign

Co-Branding

Safety Pledge

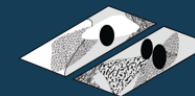
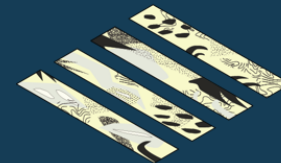
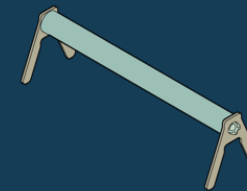
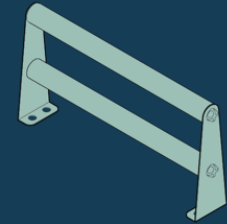
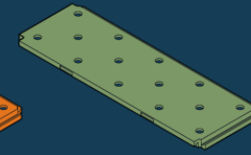
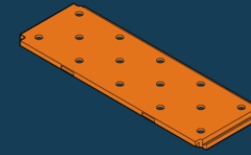
Kit of Parts as Engagement Tool

- The SCAG *Go Human* Kit of Parts is a tool to engage historically disinvested communities
- It shows how a typical street can transform into one that centers pedestrian and cyclist users, where streets are shared public space instead of primarily thoroughways for cars
- Residents experience the street in a new way through interacting with the treatments and providing feedback/input that informs future development



Kit of Parts Contents

- The Kit of Parts (“Kit”) includes custom-designed modular, lightweight, durable components that can be easily assembled to demonstrate design treatments
 - protected bike lanes
 - parklets
 - crosswalks
 - pedestrian refuge island
 - bulb-outs



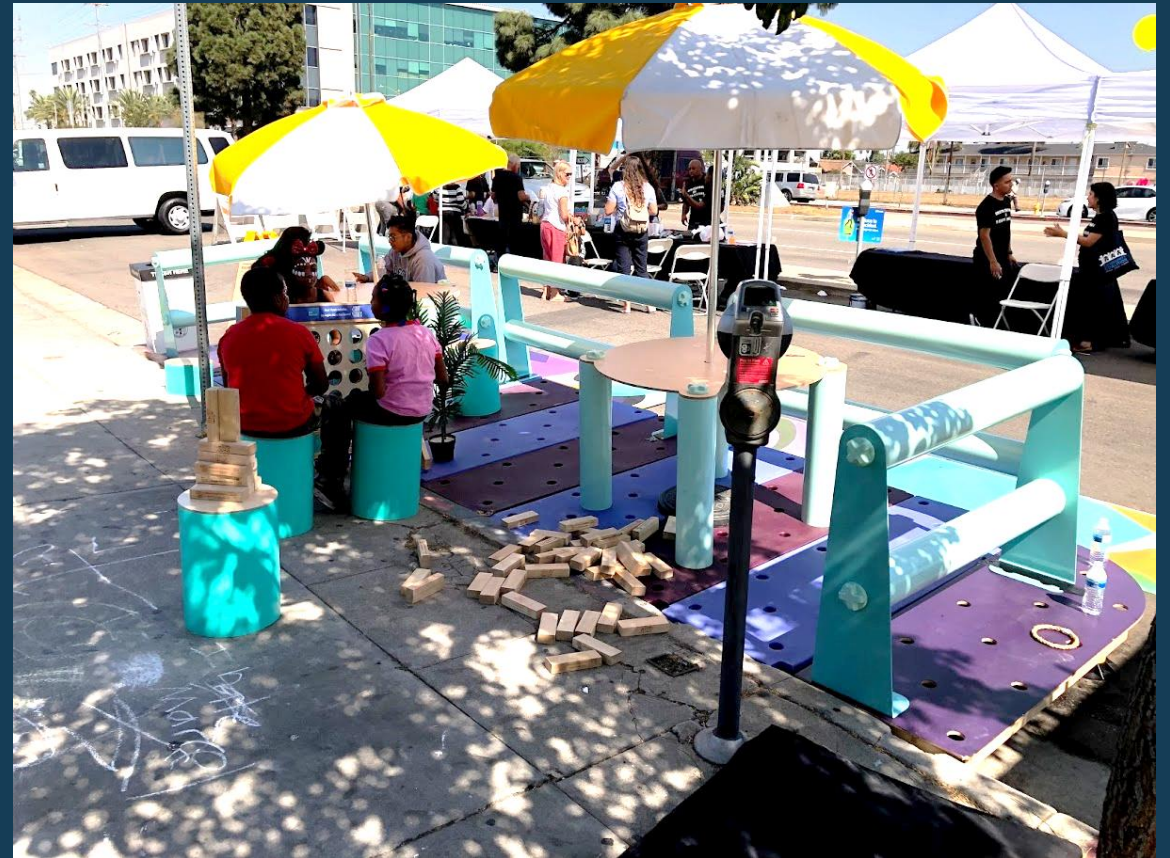
Kit of Parts Contents

- The Kit also includes advertising and marketing resources, safety resources and technical assistance to support street and traffic safety



Kit of Parts Program

- The Kit of Parts program brings a wide range of active transportation interventions to under-resourced communities in the short term, allowing residents to enjoy them and understand their benefits without having to wait many years for full implementation.
- By helping to build this constituency for future improvements, the project strengthens community resilience and advances equity.



Kit of Parts Program Equity Considerations

- Center community need, engage communities and promote public space access, especially with historically disinvested communities such as Black, Indigenous and People of Color;
- Promote equitable and resilient economic recovery, especially amongst the most vulnerable, such as street vendors, Black and minority-owned small businesses, and essential workers;
- Showcase and experience proposed safety infrastructure improvements for vulnerable users, essential workers, and essential services; and
- Test and refine planned designs; use community feedback to strengthen future funding applications.

SCAG Go Human Kit of Parts in Action



Bulb-out / Curb Extension

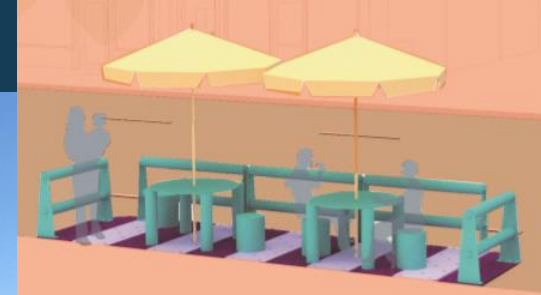


Location:
Del Rey, Los Angeles
Agency Partner:
Los Angeles Great
Streets Program

SCAG Go Human Kit of Parts in Action



Parklet



Location:
Menifee, California
Agency Partner:
City of Menifee

SCAG Go Human Kit of Parts in Action



Creative Crosswalk



Location:
La Habra, California
Agency Partner:
Orange County Health
Care Agency

SCAG Go Human Kit of Parts in Action



Separated Bike Lane



Location:
Glendora, California
Agency Partner:
City of Glendora

Demonstration Projects Moving towards Permanent Implementation



Culver City Advances La Ballona Elementary Safe Routes to School Project after City Council Approval



San Pablo Avenue phase one makeover completed: 'It's like the family room of Palm Desert'



\$13.6M La Quinta Village Complete Streets construction project to start



Permanent installations include a scramble crosswalk and in 2019 a colorful pedestrian underpass lighting, the first of its kind in Riverside County.

FY21 Community-Led, Equity-Centered Strategies

NEW!

**Local
Community
Ambassador
Safety Cohort
Program**

**Street Level
Safety and
Resiliency Mini
Grant Program
for Community
Partners**

**Sub Regional
Safety Peer
Exchange
Forums**

**Kit of Parts
Pandemic
Strategy &
Resilient
Streets
Implementation**

Thank you



Dorothy Le Suchkova (she/her/hers)
Senior Regional Planner, SCAG
scag.ca.gov
suchkova@scag.ca.gov

Jessie Heneghan
Planning Coordinator, Kounkuey Design Initiative
kounkuey.org
jessie@kounkuey.org